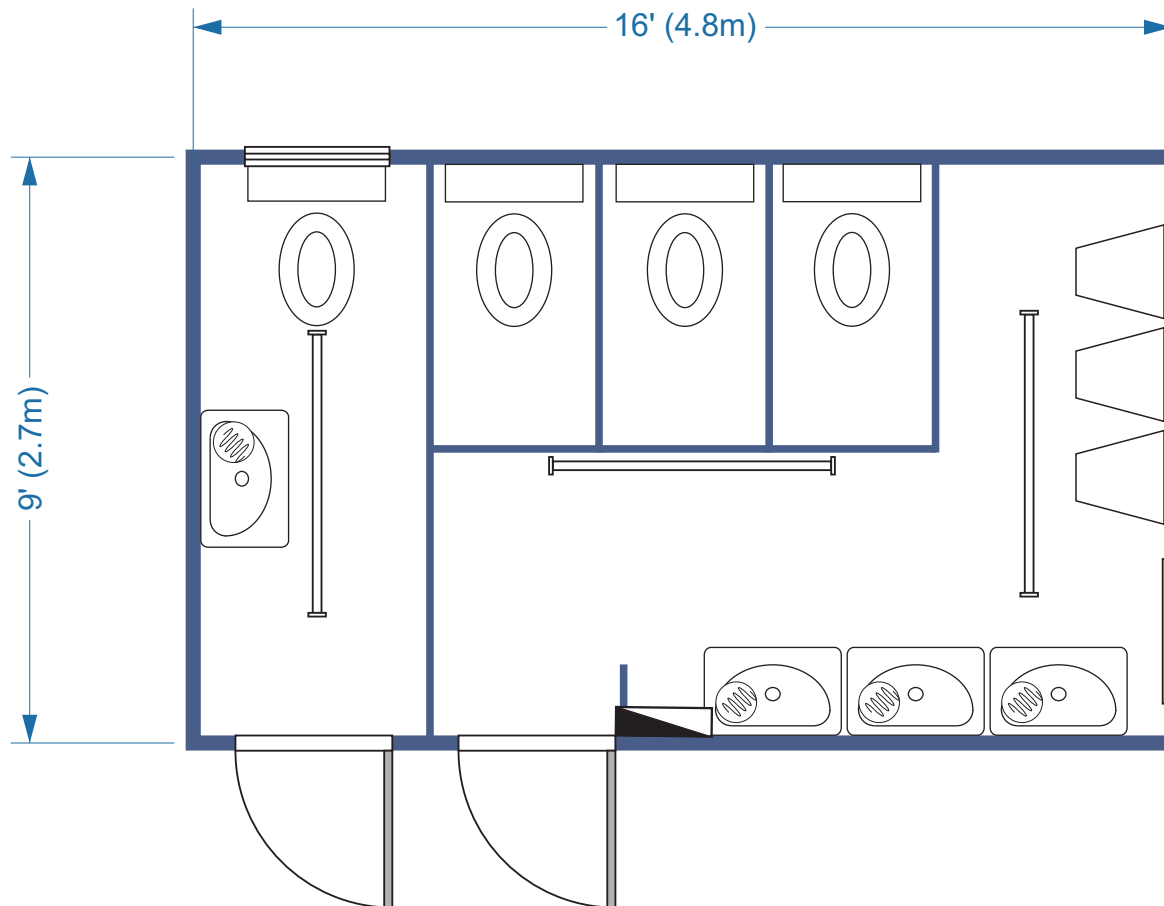


ANTI-VANDAL UNIT (8422)

Size
16' x 9' / 4.8m x 2.7m

Layout:
3+1 TOILET UNIT



	- DOOR
	- WINDOW
	- LIGHT SWITCH
	- PULL CORD
	- TWIN SOCKET
	- HIGH LEVEL SOCKET
	- STRIP LIGHT
	- CAT 2 LIGHT
	- BULKHEAD
	- JACKLEG
	- FUSE BOARD
	- 2KW CONVECTOR HEATER
CW	- COLD-WATCHER HEATER
DF	- DOWN-FLOW HEATER
EXT	- EXTRACTOR FAN
	- SINK & HOT WATER HEATER
	- WORK TOP
	- TOILET
	- HAND BASIN
	- TOILET ROLL HOLDER
	- DOUBLE LEAF SHUTTERS
	- FUSE SPUR

- corrugated steel external construction, recently resprayed in blue RAL5010
- 2No. external outward opening steel doors with integrated locks and keys
- 2No. single glazed high level windows with anti-stone mesh guards
- Male side is fitted with 3No. cubicles, 3No. urinals and 2No. hand-wash basins

- Female suite is fitted with toilet and hand-wash basin
- Flooring is hard wearing polyflor vinyl over steel joists
- Internal walls and ceiling are finished in vinyl faced plywood
- Full heat, light and power via mains fuse board

LAYOUT APPROVAL

COSTS OR TIME DELAYS DUE TO LAYOUT CHANGES SUBSEQUENT TO LAYOUT APPROVAL WILL BE CHARGEABLE TO THE CUSTOMER. ORDER WILL NOT BE CONFIRMED UNTIL SIGNED DRAWING IS RECEIVED.

SIGN _____

Est. 1999
concept^o
accommodation ltd

0115 944 1100

conceptcabins.co.uk

info@conceptcabins.co.uk