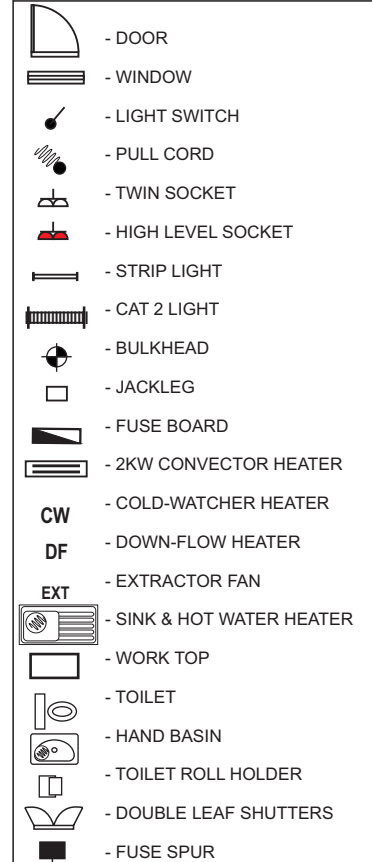
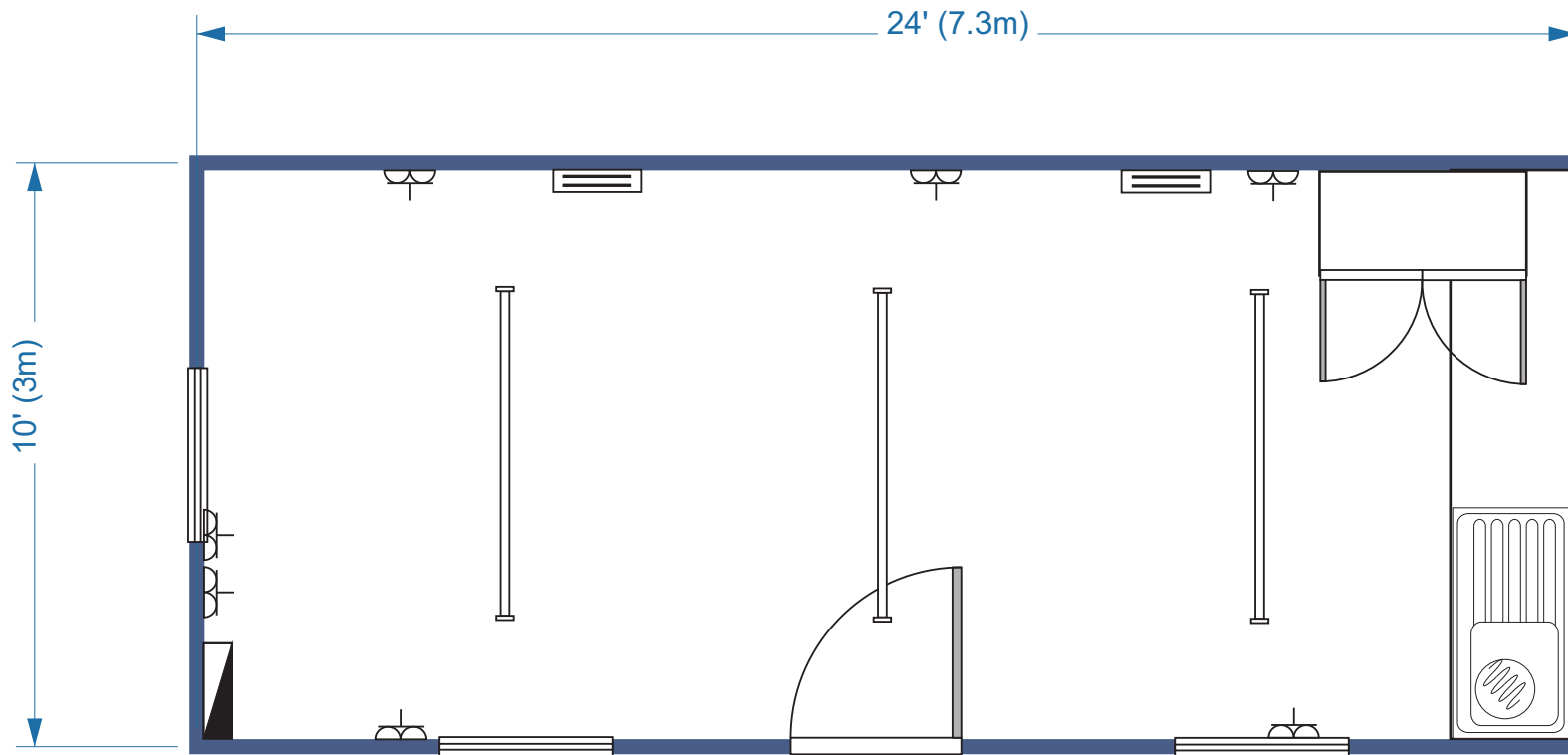


## PLASTISOL UNIT

Size  
24' x 10' / 7.3m x 3m

Layout:  
CANTEEN UNIT



- Building finished externally in grey plastisol with blue plastisol trims and steel jacklegs
- 1 inward opening steel door with integrated locks
- 4No. double glazed uPVC full opening windows

- Sink, work-surface, water-heater & base-unit
- Floor is finished in hard wearing grey poly floor vinyl
- Internal walls and ceiling are finished in white vinyl faced plasterboard
- Full heat, light & power via mains fuse board

### LAYOUT APPROVAL

COSTS OR TIME DELAYS DUE TO LAYOUT CHANGES SUBSEQUENT TO LAYOUT APPROVAL WILL BE CHARGEABLE TO THE CUSTOMER. ORDER WILL NOT BE CONFIRMED UNTIL SIGNED DRAWING IS RECEIVED.

SIGN \_\_\_\_\_

Est. 1999  
**concept**<sup>o</sup>  
accommodation ltd

0115 944 1100

conceptcabins.co.uk

info@conceptcabins.co.uk