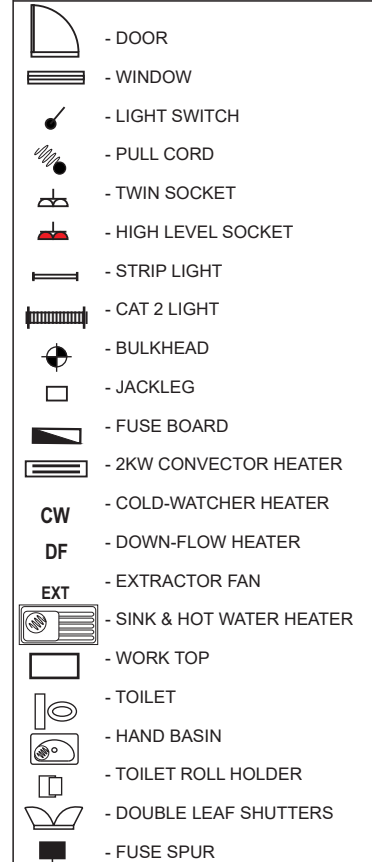
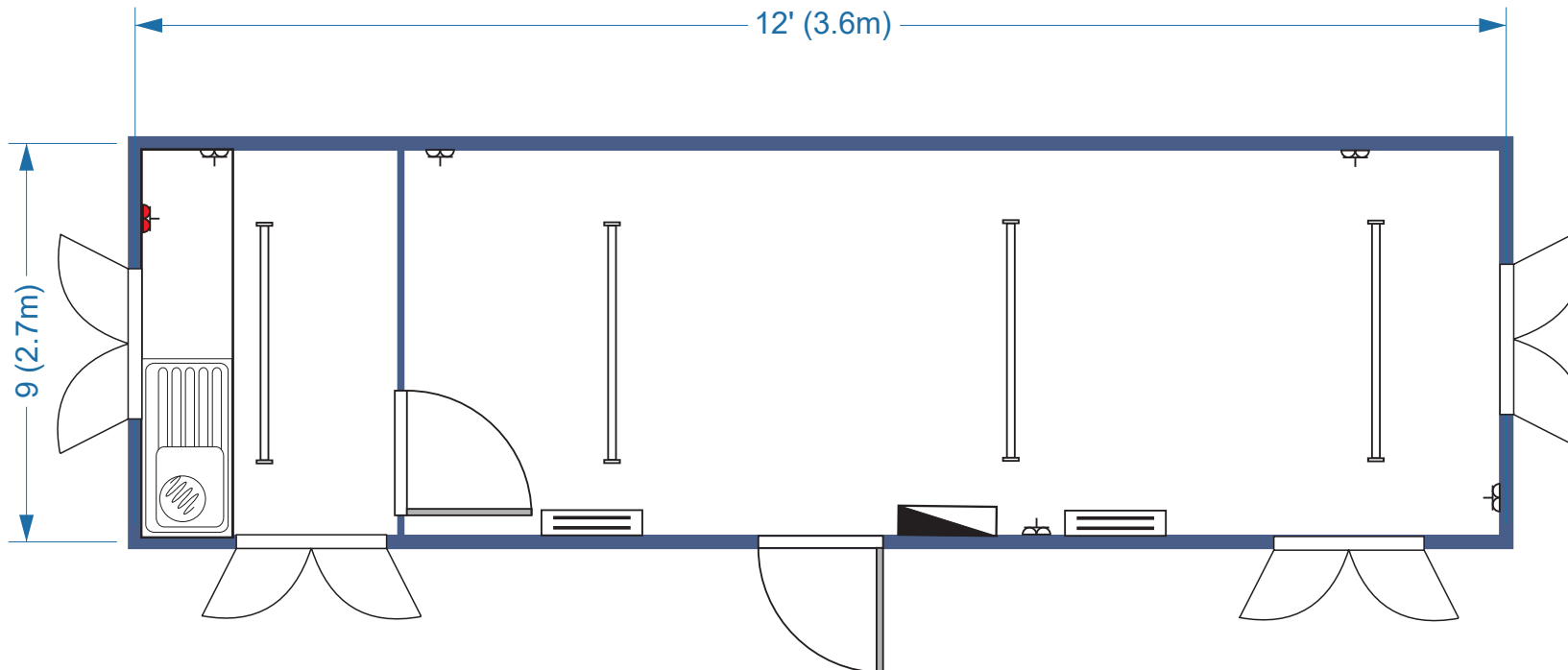


## ANTI-VANDAL UNIT (8581)

**Size**  
32' x 10' / 9.6m x 3m

**Layout:**  
CANTEEN & OFFICE UNIT



- Corrugated steel external construction, recently resprayed in blue RAL5010
- 1No. external outward opening steel door with integrated locks and keys
- 4No. uPVC tilt & turn windows with steel double leaf shutters
- Unit fitted with sink, base-unit, water-heater and work-top

- Flooring is hard wearing grey polyflor vinyl over steel joists
- Internal walls and ceiling are finished in white vinyl faced plasterboard
- Unit fitted with PIR light fittings throughout Full heat, light & power via mains fuse board

### LAYOUT APPROVAL

COSTS OR TIME DELAYS DUE TO LAYOUT CHANGES SUBSEQUENT TO LAYOUT APPROVAL WILL BE CHARGEABLE TO THE CUSTOMER. ORDER WILL NOT BE CONFIRMED UNTIL SIGNED DRAWING IS RECEIVED.

SIGN \_\_\_\_\_

Est. 1999  
**concept**<sup>o</sup>  
accommodation ltd

0115 944 1100

conceptcabins.co.uk

info@conceptcabins.co.uk