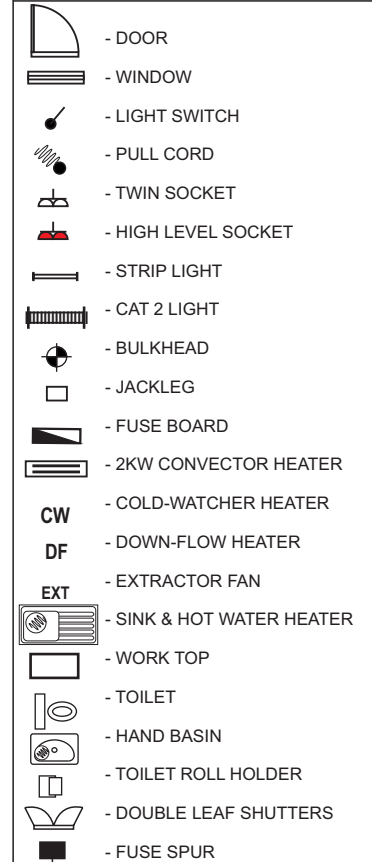
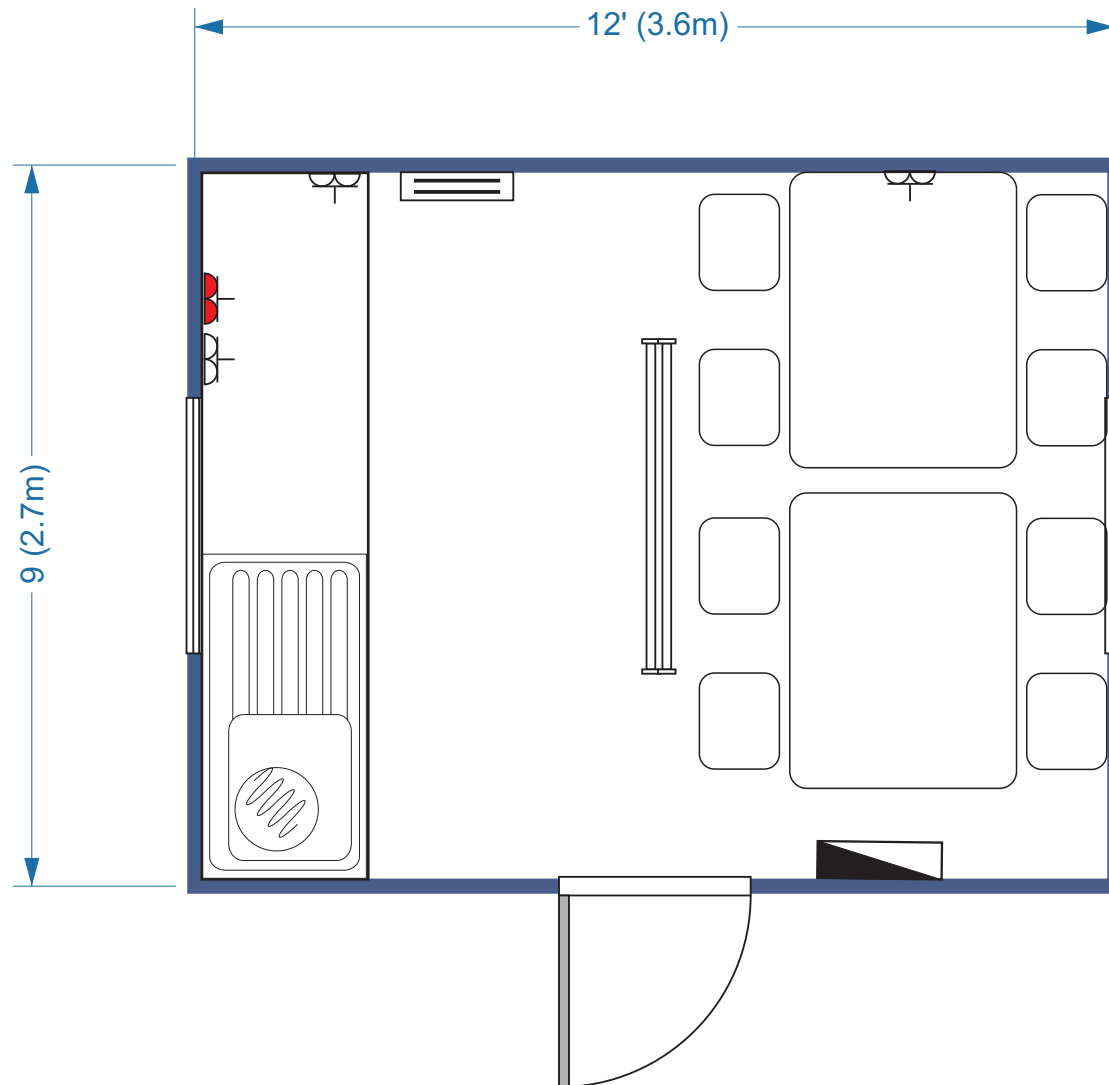


ANTI-VANDAL UNIT (8473)

Size
12' x 9' / 3.6m x 2.7m

Layout:
CANTEEN UNIT



- Flat-sided steel external construction, recently resprayed in blue RAL5010
- 1No. external outward opening steel door with integrated locks and keys
- 2No. single glazed aluminium sliding windows with double leaf steel shutters

- Unit fitted with sink, work-surface, water-heater and base unit
- Flooring is hard wearing grey polyflor vinyl
- Internal walls and ceiling are finished in white vinyl faced plywood
- Full heat, light & power via mains fuse board

LAYOUT APPROVAL

COSTS OR TIME DELAYS DUE TO LAYOUT CHANGES SUBSEQUENT TO LAYOUT APPROVAL WILL BE CHARGEABLE TO THE CUSTOMER. ORDER WILL NOT BE CONFIRMED UNTIL SIGNED DRAWING IS RECEIVED.

SIGN _____

Est. 1999
concept^o
accommodation ltd

0115 944 1100

conceptcabins.co.uk

info@conceptcabins.co.uk