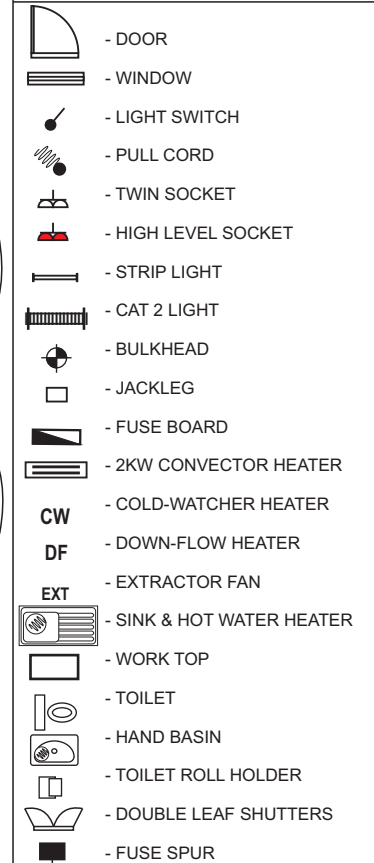
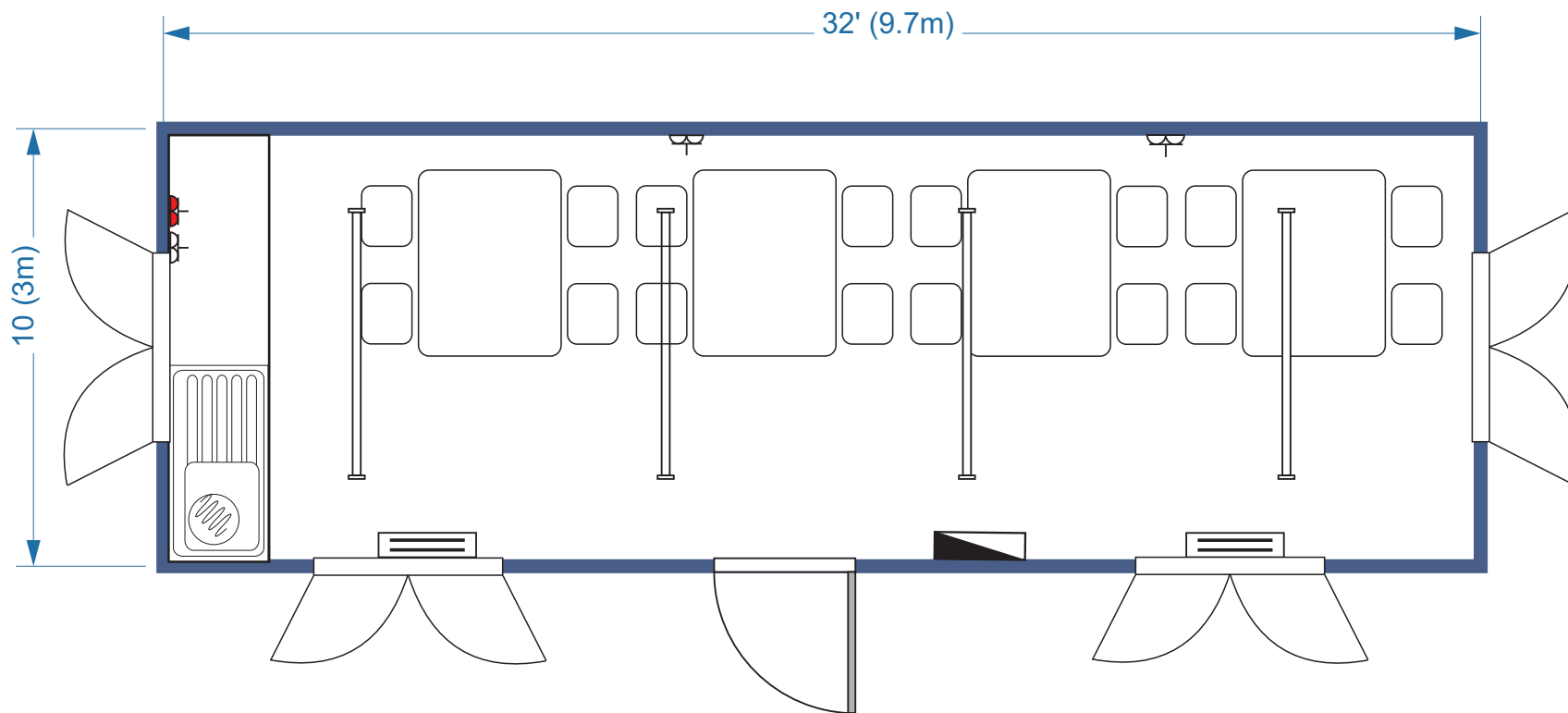


ANTI-VANDAL UNIT (8583)

Size
32' x 10' / 9.7m x 3m

Layout:
CANTEEN UNIT



- Corrugated steel external construction, recently resprayed in blue RAL5010
- 1No. external outward opening steel door with integrated locks and keys
- 4No. single glazed sliding windows with double leaf steel shutters

- Fitted with sink, work-surface and water-heater & canteen tables
- Flooring is hard wearing grey polyflor vinyl
- Internal walls & ceiling are finished in vinyl faced plasterboard - recently repainted
- Full heat, light & power via mains fuse board

LAYOUT APPROVAL

COSTS OR TIME DELAYS DUE TO LAYOUT CHANGES SUBSEQUENT TO LAYOUT APPROVAL WILL BE CHARGEABLE TO THE CUSTOMER. ORDER WILL NOT BE CONFIRMED UNTIL SIGNED DRAWING IS RECEIVED.

SIGN _____